

Splashjet Print Technologies

Company Profile



Manufacturer of Quality Inkjet Inks

SPLASHJET

Colouring Your World

Splashjet – About Us

Specialized Manufacturer of Aqueous Inkjet Inks

- Established in 2006
- Dedicated 10 years of Inkjet Technology
- Based in India, Nagpur City, Maharashtra State

Wide Range of Inkjet Inks

- Digital Textile Printing Inks
- Industrial Inkjet Inks
- Large Format Printer Inks
- Desktop Printer Inks

ISO 9001: 2008 QMS certified

ISO 14001: 2003 EMS certified



Product Range

Wide Range -

- Inks for Desktop Printers (SOHO + Photo)
- Inks for Large Format Printers (Graphic Arts + Photo + CAD)
- Sublimation Inks for Transfer Printing
- Inks for Digital Textile Printing
- Inks for Industrial Inkjet Printers & Press
- Inks for Professional Inkjet Dry Labs



Inks for Desktop



Inks for Digital Textile



Inks for Sublimation



Inks for LFP

SPLASHJET

Colouring Your World

Product Range - I

Desktop Printer Inks

- Dye Base Inks
- Pigment Base Inks

Available For :

- Epson
- HP
- Canon
- Brother
- Ricoh



SPLASHJET

Colouring Your World

Product Range - II

Large Format Printer Inks

- Dye Base Inks
- Pigment Base Inks
- Dye Sublimation Inks

Available For :

- Epson
- HP
- Canon
- Noritsu
- Fuji
- Encad



SPLASHJET

Colouring Your World

Product Range - III

Digital Textile Printing Inks

- Textile Pigment Inks
- Dye Sublimation Inks
- Reactive Dye Inks
- Direct Disperse Inks

Available For :

- Epson Heads
- Ricoh Heads
- Seiko Heads
- Konica Minolta Heads
- Fuji Dimatix Heads



Product Range - IV

Specialty Inkjet Inks

- Digital Inkjet Press Inks
- Inkjet Label Press Inks
- Inkjet Engraver Inks
- Positive Inkjet Film Inks
- Custom Ink Development



SPLASHJET

Colouring Your World

Key Strengths

- **Qualified Team**
- **Sophisticated Infrastructure**
- **Clean Room Manufacturing**
- **Application Test Laboratory**
- **Customer Centric Ethical Approach**
- **Custom Product Development Capabilities**

- **Analytical Instruments**
 - HPLC
 - Ion Chromatography
 - Particle Size Analyzer
 - Spectrophotometer
- **Physical Properties**
 - Viscosity Measurement
 - Static Surface Tension
 - Dynamic Surface Tension
 - Conductivity Meter
 - pH Meter
 - Freeze Thaw Tests
 - Drawdown Instrument

Manufacturing Facility

- **Installed Capacity 360 MTPA**
- **New 720 MTPA facility to be commissioned in 1st Quarter 2017**
- **Water purification plant – Type I (highest purity)**
- **In-house Dye Purification Technology**
- **Pigment Milling and Stabilization Technology for stable dispersions**
- **Dedicated Product Blending Lines**
- **Zero Discharge Waste Water Management System**
- **Ultra-filtration & Nano-filtration Facilities**

Application Test Lab

- **Printers**
 - Epson DX5, DX7, TFP, PrecisionCore Printers
 - Ricoh GH2220, Gen4 Printers
 - KM512i Printers
 - Epson Desktop & LFP Printers
 - Canon Desktop & LFP Printers
 - HP Desktop & LFP Printers
 - Brother Desktop Printers
 - Direct to Fabric (Textile) Printers
- **Application Specific Instruments**
 - Launder-o-meter
 - Crockmeter
 - Padding Mangle
 - Steamer

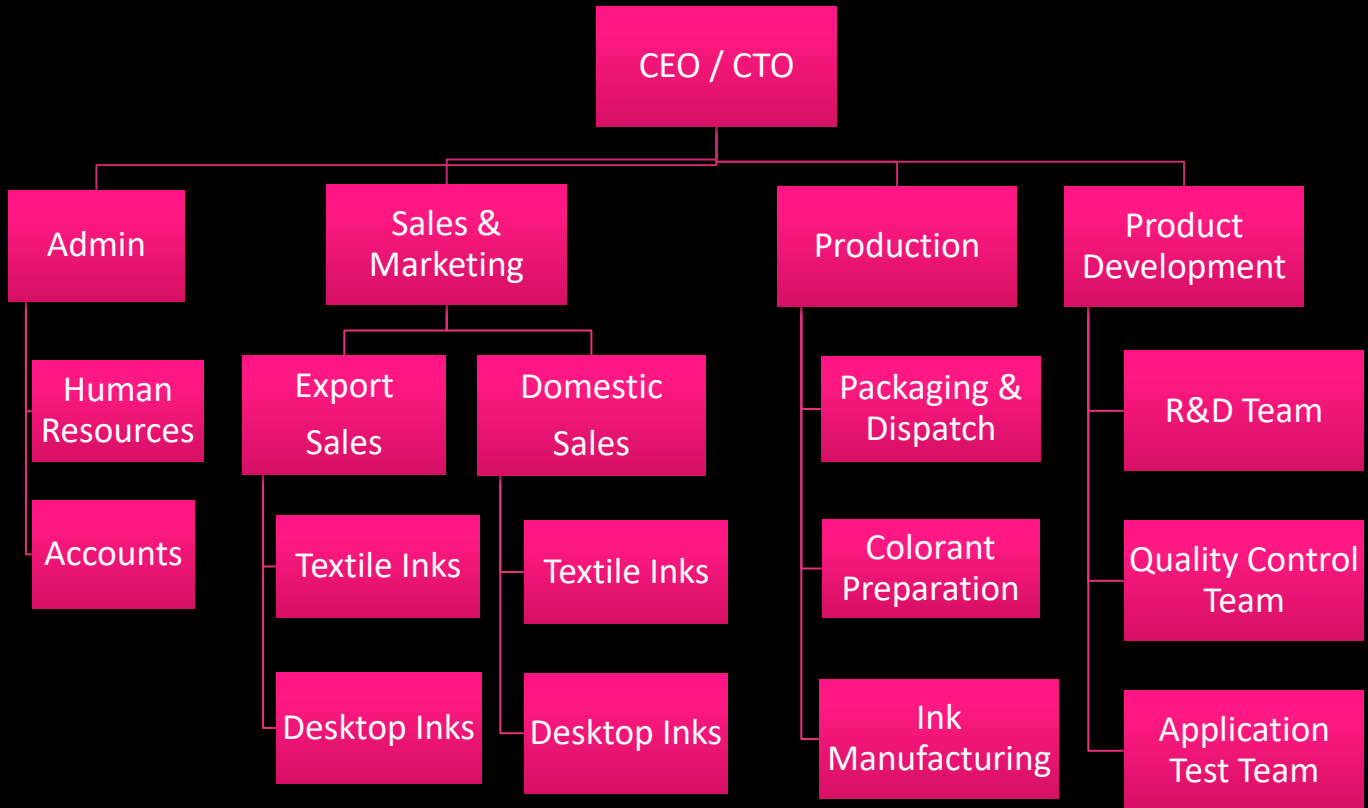
SPLASHJET

Colouring Your World

Qualified Team

- **Product Development Team**
 - **Analytical Chemists**
 - **Process Engineers**
- **Quality Control Team**
 - **Chemists**
- **Application Test Team**
 - **Printer Engineers**
 - **Color Management Specialists**

Team Splashjet



Key Competency

Dye Purification Technology -

Specially for high frequency inkjet print-heads, low salt contents is extremely important for print-head performance. With thorough understanding of purity of dyes & its significance, Splashjet inks ensure excellent run-ability and long print head life.

Inkjet Print-head Technology -

Years of experience with industrial inkjet print-heads, we understand importance of all key aspects such as jet-ability, drive frequency, meniscus management, decap performance, nozzle recovery, degassing of the inks etc.

Consistency & Inks -

Elaborate quality control systems & procedures to ensure consistency of key physical & chemical attributes of the inks.

Application Specific Development -

In depth exposure to performance requirements of inkjet inks for variety of inkjet applications such as photography, textiles, graphic arts, décor printing, CAD CAM GIS etc.

Thanks !!!

www.splashjet-ink.com
gaurav@splashjet-ink.com

+91-922-322-4016
+91-7104-646601 / 02

Splashjet Print Technologies,
D1/A, D4/2, Shed C,
At Old Bajaj Plastics, MIDC – Hingna
Nagpur, Maharashtra
India. Pin - 440016