

# Managing Biobanking, Clinical Research & Testing Data using Spreadsheets? Switch to an Advanced SaaS LIMS

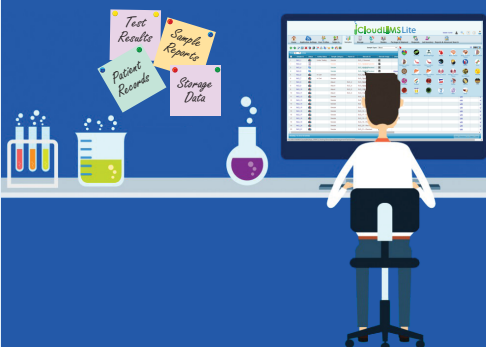


A Laboratory Information Management System






## Complimentary Services

-  Product Hosting, Maintenance & Backups
-  Module Configuration
-  Unlimited Training & Technical Support
-  Legacy Data Migration
-  Upgrade Assurance


## Pay as you go!



## Key Benefits

-  **360° Traceability**  
Comprehensive features for managing laboratory operations
-  **Zero Capex**  
No investment in IT infrastructure
-  **Accessibility**  
Access, transact & track information from anywhere
-  **Collaboration**  
Collaborate & share in real-time
-  **Save Time**  
Save time on initial installation & upgrades

## Security and Reliability

-  **Highest Up-time**  
99.9% @365x24x7 availability
-  **Foolproof Security**  
Multilevel security on SOC compliant IT infrastructure
-  **No Data Loss**  
Automatic data backup
-  **Comprehensive Compliance**  
Follows 21 CFR Part 11, HIPAA & CAP Accreditation guidelines

# What Our Happy Customers Say



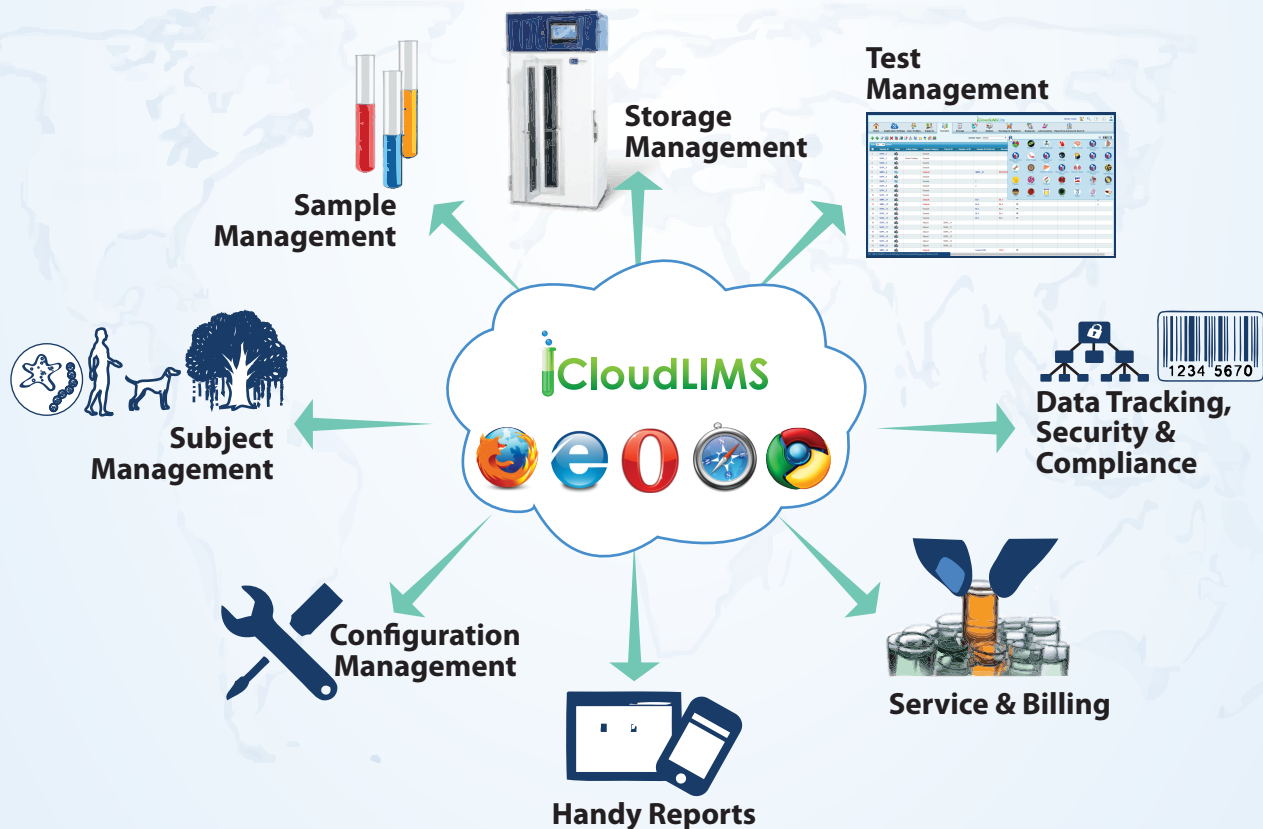
"We are very pleased to use CloudLIMS for managing multi-lab work-flows involving the collection of several different types of samples. With CloudLIMS's enhanced user group management and the unique configuration module, we could accommodate diverse work flows of six different types of labs into one single product. The access level control helps us manage data integrity. The complimentary data migration services were a big plus for us. It took the onus of uploading all the data off our shoulders and enabled us to get started with CloudLIMS without dedicated staff. I recommend CloudLIMS to whoever needs a LIMS solution for the life sciences."

"With CloudLIMS, we were able to load our legacy data of 60,000 samples rapidly using the universal uploader. The uploader directly maps our existing data to the data fields in CloudLIMS. The data fields and our laboratory workflows were easy to configure, which allowed for a quick deployment!"



The University Of Sheffield.

## A Complete Solution for Your Lab



To chat about your lab management needs, contact us



[sales@cloudlims.com](mailto:sales@cloudlims.com)



+1-302-789-0447



[www.cloudlims.com](http://www.cloudlims.com)