

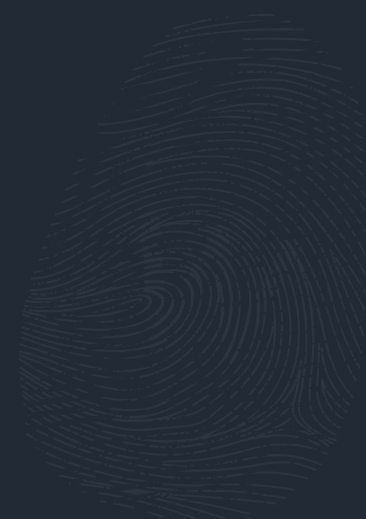


# web clues

A Finite Solution



# About Us





# Glance at WebClues

Your vision, our creation



WebClues started in 2014 with web development and designing services with team of five experts, we then explored and mastered iPhone app development, Android app development, Windows-phone development and mobile games. From simple PHP programming to customized apps development, we have successfully delivered all size projects for almost all industry verticals and reached the team of 80+ resources on board.

WebClues primarily aims to provide clients complete IT solutions and outsourcing services which include website design, web application development, CMS-based dynamic website (complete control over website content and front-end), eCommerce solutions, mobile application solutions, latest technologies (Node, iBeacon, AWS, IOT etc.) at affordable price with superior quality. We have well-equipped development center in India housing a team of 80+ of experts in different domains including research, business analysis, project management, programming, database administration, creative designing, animation and quality control.



# Overview

With our remarkable services and solutions, we help to flourish your business



**web clues**  
A Finite Solution



## What We Are

- Experience of 5+ years in IT Industry
- Expertise in diverse mobile and web technologies
- Served more than 10 different industry domains
- Excellent talent pool and connections



## Our Expertise

- Product Consulting
- Intuitive Design
- Agile Development
- Quality Assurance
- Marketing Strategy



## IT Infrastructure

- Security - Secured development environment (SVN), CCTV Camera
- Customer Support - 24/7 client support via phone, 99.99% up-time with high speed internet connection, VoIP, Video conferencing, Instant messengers



# Vision and Core Values

Be a leading software solutions provider by fostering innovation, quality and delivery speed



## Client Satisfaction

- › Listen and respond to our customers
- › Make it easy for our customers to work with us
- › Deliver innovative and competitive products
- › We provide top-notch customer services



## Result Orientation

- › Set challenging and competitive goals
- › Focus on output
- › Assume responsibility for our customers
- › Execute flawlessly



## Speed and Efficiency

- › Time to market is of utmost importance
- › Focus on reusability of modules and components
- › Unleash the power of knowledge management and project management



## Quality

- › Achieve highest standard of excellence
- › Do right things right
- › Continuously learn, develop and improve
- › Take pride in your work



## Great Place to Work

- › Promote challenging work environment
- › Work as a team with respect for each other
- › Foster innovation
- › Be open and direct



# Process & Approach

Whatever you think about we deliver it



## What We Offer

- › End-to-end services
- › Ability to scale
- › Best people, low attrition and steep ramp-up capability
- › Global presence and mature delivery models
- › ISO standard processes and focus on high quality
- › Sound domain knowledge and diverse technical competence

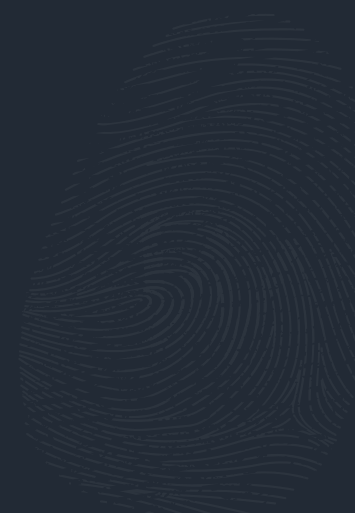


## What You Get

- › Business and technical consultation
- › High confidence levels in delivery and relationship
- › Quick time to market, lower costs
- › Quality delivered by a very few companies worldwide
- › Round the clock support
- › Sound methodologies, repeatability



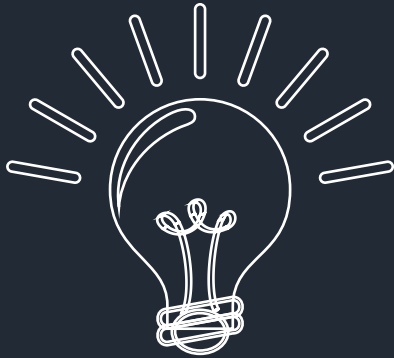
## Our Capabilities





# Industry Experience

Empowering Your Business



Education



Healthcare



Hotels



Retail and eCommerce



Sports and Lifestyle



Travel and Tourism





# Services and Solutions

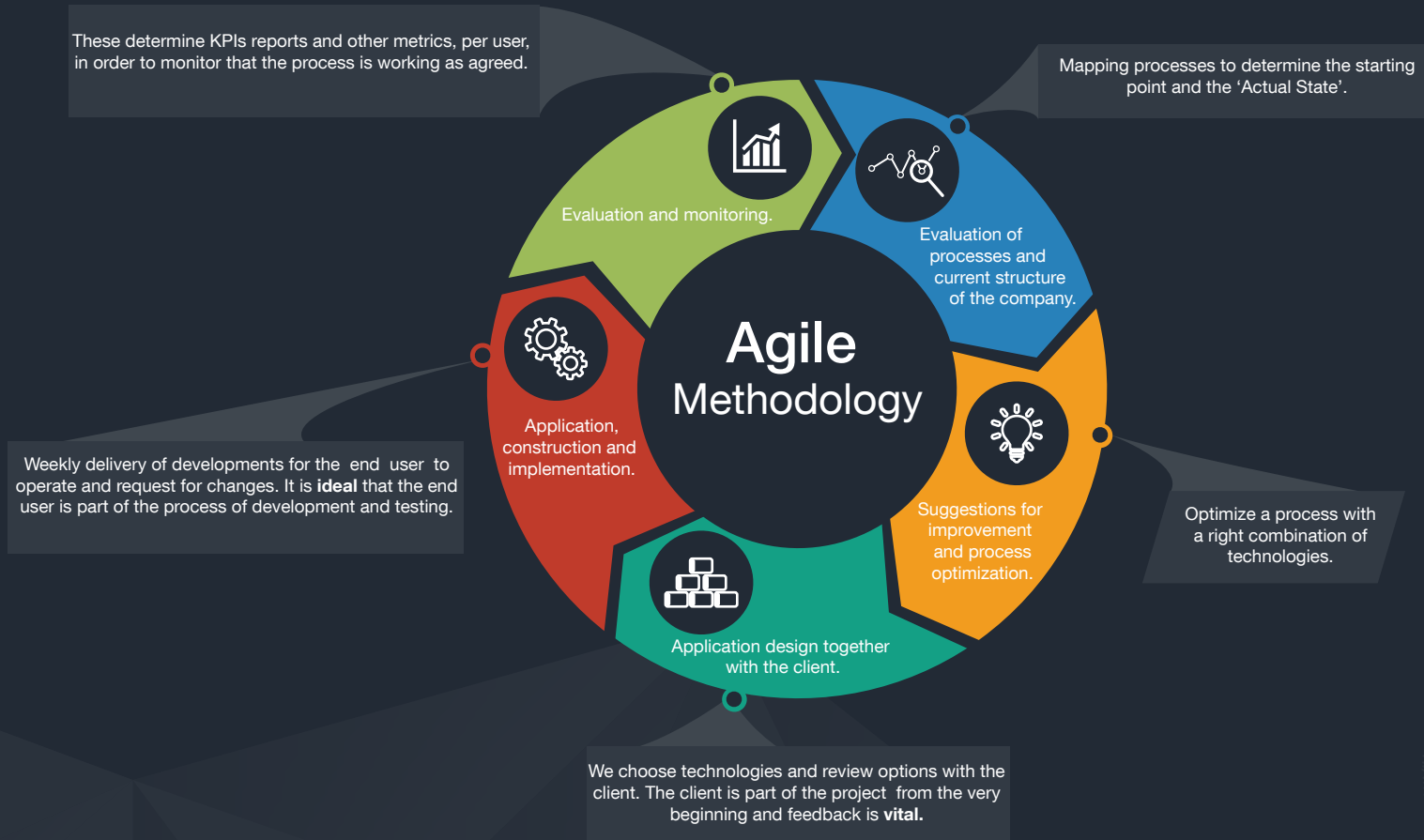
All browsers, any system, any platform





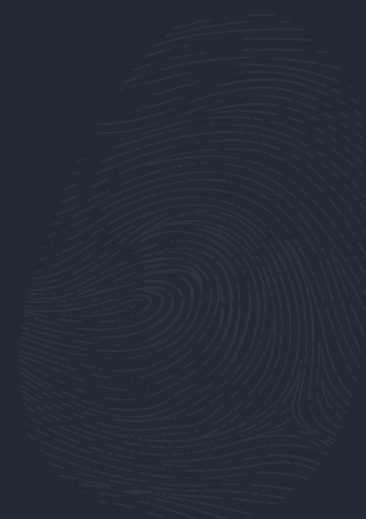
# Execution Strategy

Adaptive planning, evolutionary development, early delivery, and continuous improvement





# Success Stories





# Success Stories

The best way to know us is to see our work



Ecommerce Solution  
120+ Projects



CMS Development  
150+ Projects



Mobile App Solution  
720+ Projects

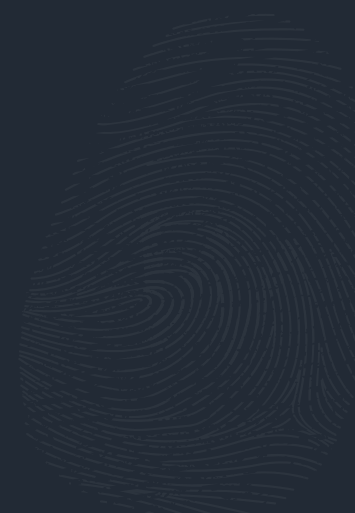


Web Design  
950+ Projects





## Our Products





# Wow Laundry

Service Industry



WOW Laundry provides a premium app and web based laundry, ironing and dry cleaning pickup and delivery service in Bangalore. It is an easy, convenient, time saving and affordable way to take care of all your laundry and dry cleaning tasks.



Download on the  
**App Store**



GET IT ON  
**Google Play**



Visit our  
**Website**



# Indian Railways

Transportation Industry



Indian Railway IRCTC PNR App is a must have app for all Indian train users. This app is available in Hindi , English & Bengali. Check Indian railway train schedule, PNR status, book tickets on IRCTC, get NTES information and much more in one simple app!

Download on the  
**App Store**

GET IT ON  
**Google Play**

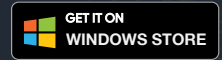


# IMI

Utility



This app lets you manage and monitor your tank levels remotely on your mobile with great accuracy, robust architecture, near real time visibility and intelligent auto alerts to assist with achieving operational excellence and KPIs by delivering prompt updates.





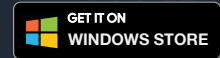


# Reach Expansion

Agriculture Industry



RE has integrated 6 modules for agro-chemical companies with the help of which your organization can tap the full potential of rural markets by consolidating and automating everything from Customer Care, Activity Planning to Sales Planning and Channel Sales.





# Leadership Team

Creative, effective, innovative and communicative



## Ayush Kanodia

Founder

Ayush started WebClues with a vision to create an organization that combined IT with innovative ideas to build solutions that benefited a wide range of users and industries. Exceptionally self-motivated and directed; Ayush analyzes, evaluates and motivates team-oriented collaborative environment.



## Deep Shah

Co-Founder

One of the co-founders of webclues leads the organization's operations, sales strategy and key business initiatives of the company. Holding a degree in business information system and with over 8 years of experience in corporate development and emerging business, he leads the technical team with precision and passion.



## Nainesh Pandya

Co-Founder

The co-founder of Webclues is a visionary leader who oversees the corporate direction and successful growth of the Company and its employees, alike. A mentor for young entrepreneurs, Nainesh encourages teamwork, 'out-of-the-box' approach and innovation.



## Nikhil Parmar

Team Leader

He brings to the organization rich industry experience having successfully spearheaded several initiatives on the technology front end. Nikhil also leads the **training and development** division of the organization, spearheading its programs for the holistic growth of the employees.



## Contact Us

Follow Us:

### India

1009-1010, Signature-1,Nr. Divya Bhaskar,  
S G Highway, Makarba,  
Ahmedabad-380051, Gujarat

✉ [sales@webcluesinfotech.com](mailto:sales@webcluesinfotech.com)

☎ +91-972-771-9241

### UK

107 Wood Lane, Isleworth,  
TW7 5EG  
London

✉ [sam@webcluesinfotech.com](mailto:sam@webcluesinfotech.com)

☎ +44(0)-750-307-0807

### USA

P.O Box 2412,  
Streetsboro,  
OH 44241

✉ [deep.shah@webcluesinfotech.com](mailto:deep.shah@webcluesinfotech.com)

☎ +1-315-245-8500

Send your queries, comments & suggestions to [✉ sales@webcluesinfotech.com](mailto:sales@webcluesinfotech.com) [📱 webcluesinfotech](#) [📄 sam.webcluesinfotech](#)